



## Supplementary material

# Short Communication: Mitochondrial *Cyt-b* and *Cox1* Genes Based Molecular Diversity and Phylogenetic Analysis of Chukar Partridge (*Alectoris chukar*)

Maria Khalid<sup>1</sup>, Tanveer Hussain<sup>1\*</sup>, Zahid Farooq<sup>2</sup>, Kamran Abbas<sup>1</sup> and Masroor Ellahi Babar<sup>1</sup>

<sup>1</sup>Department of Molecular Biology, Virtual University of Pakistan, Lahore.

<sup>2</sup>The Cholistan University of Veterinary and Animal Sciences, Bahawalpur

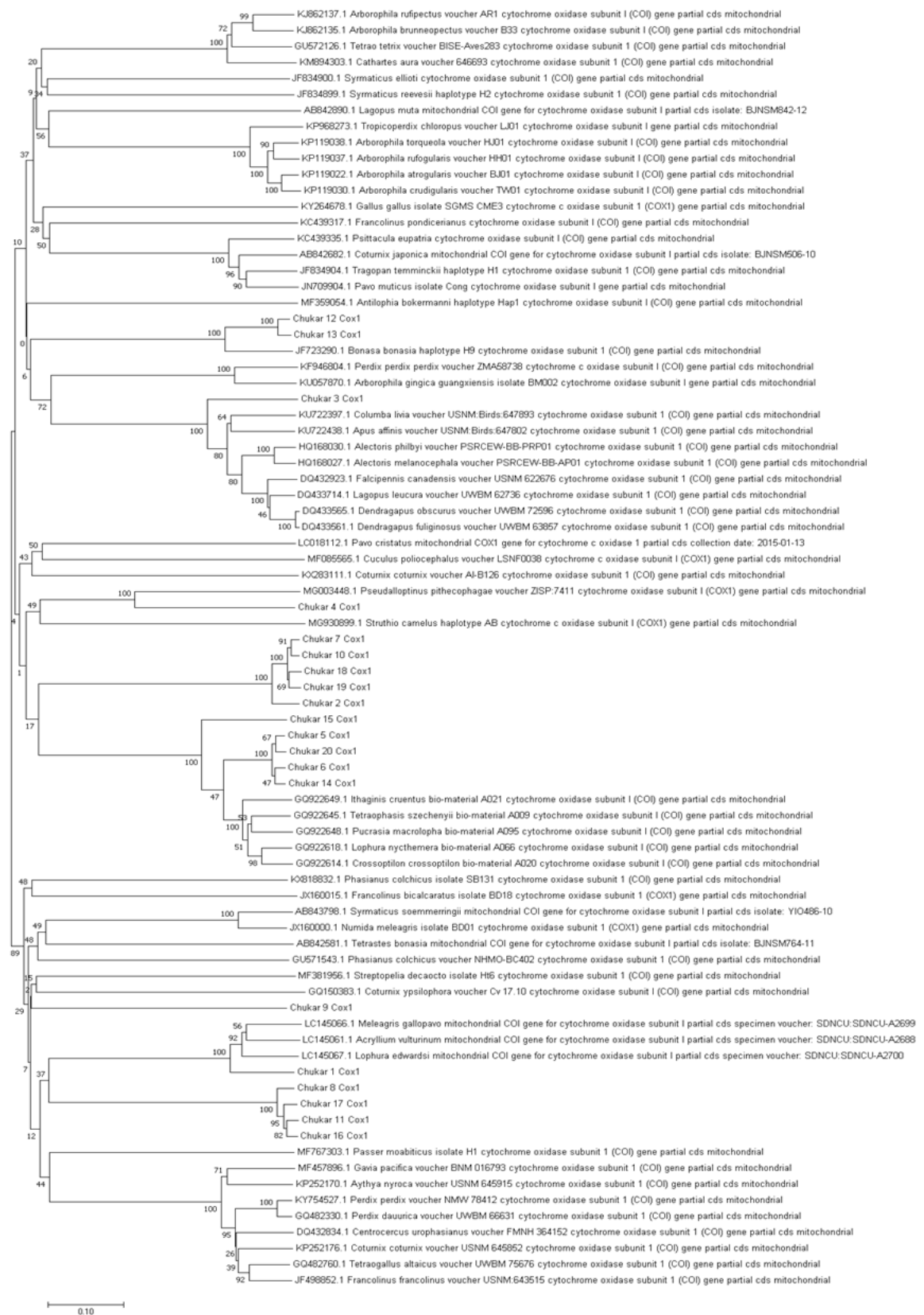
\* Corresponding author: [tanveer.hussain@vu.edu.pk](mailto:tanveer.hussain@vu.edu.pk)

0030-9923/2020/0004-1607 \$ 9.00/0

Copyright 2020 Zoological Society of Pakistan



Supplementary Fig. 1. Mitochondrial *Cyt-b* gene sequences from *A. chukar* and NCBI reported Phasianidae family sequences used to construct Neighbour Joining Tree with MEGA7.



Supplementary Fig. 2. Mitochondrial *Cox1* gene sequences from *A. chukar* and NCBI reported Phasianidae family sequences used to construct Neighbour Joining Tree with MEGA 7.